

# Quick Start Guide

## Vodafone Mobile Connect Modem

Designed  
for Vodafone





**Welcome** to your new USB data modem, designed for Vodafone with 3G and 3G Broadband.

We'll now take you through the simple process of setting it up, and help you get started – **so you can make the most of now.**

For more information, please see the User Guide. For any other problems, see the Troubleshooting section in this Quick Start Guide.

- What can I do with it? **2**
- Set up your modem **3**
- Run the software **4**
- Make a connection **6**
- Troubleshooting **8**

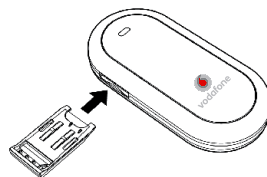
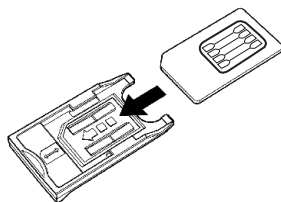


# Set up your modem

Before you can start using your new modem, you'll need to set it up.

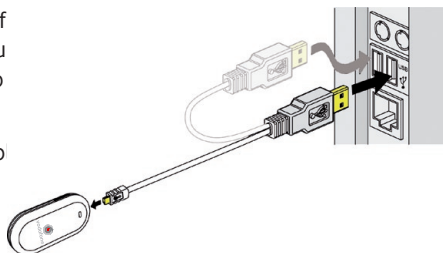
You will need to have an activated Vodafone SIM card – this should have been provided when the modem was purchased.

- Remove the SIM card holder from the side of the modem. Slide the SIM card in as shown, making sure it's firmly in place.
- Put the SIM card holder back into the side of the modem.



You should have been supplied with two data cables – one short and single-ended one, and one long and double-ended. You only need to use the double-ended cable if a single one of your USB ports does not supply enough power (if it is a self-powered USB hub example).

- Plug the single end of the data cable into the modem as shown.
- Plug the other end into your computer's USB port – if this does not power the modem, then use the double-ended cable.



This should automatically start the software – see next page.

# Run the software

## For Microsoft® Windows XP® systems

If your computer is running Microsoft Windows XP, it should automatically start the driver setup process (your modem already contains the software needed). This could a few minutes to complete. Then it will start the Vodafone Mobile Connect Lite software.

- You'll now see a license agreement screen:
- Agree to the licence agreement.
- You'll then see a new icon appear in the bottom right of your screen. If you need to start Vodafone Mobile Connect Lite again, just double-click on the icon.



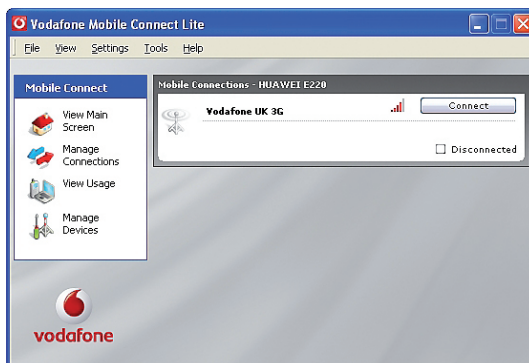
## For other versions of Windows

If you have an earlier version of Windows®, then you may need to select the start-up program using the file explorer:

- This is on the drive called Vodafone Mobile Connect Lite.
- The startup program is called VMC\_PBStarter.exe.

## For Mac OS X systems

If you're using Mac OS X 10.2.6 or higher, you will need to install the software from the CD-ROM (if provided), or download it from the Support section of [www.business.vodafone.com](http://www.business.vodafone.com).



## Configuration

The first time you run Vodafone Mobile Connect Lite, your modem will automatically be set as the default device.

If this is not the case you will need to select your data modem as the device you want to use (you may have other devices connected to your computer).

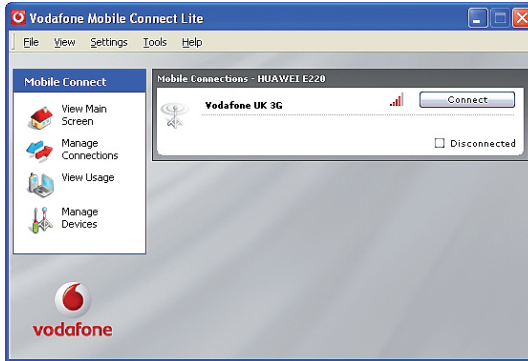
- Click **Manage Devices** in the main screen, then select the Mobile Connect Modem (it may be called the Huawei E220).
- Check the **Default** check box.
- Click **OK**.

The software will then check with the modem that everything is OK, and then you'll see the main screen appear, with a **Connect** button enabled.

- The icon in the bottom right of your screen will also change to show a green tick on top of it, to show that the modem is ready to connect you.

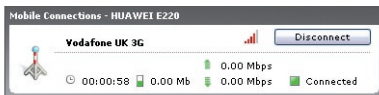


# Make a connection



Simply click on the **Connect** button to open a data connection. The main screen will now show your connection status and other information.

You should now be able to use your usual web browser and email programs.



To close the connection, click **Disconnect**.

## Modem status

Your modem will also show the signal status using the LED light on the front:

- Green blinking: a GPRS network has been found, and the modem is ready to connect.
- Green solid: Connected to a GPRS network – data being sent and received.
- Blue blinking: a 3G network has been found, and the modem is ready to connect.
- Blue solid: Connected to a 3G network.
- Light blue solid: Connected to a 3G Broadband network.



## Other settings

You can customise the way the software operates using the various option menus.

- In **Settings** you can select a new language, or whether you'd like the software to load automatically when Windows starts.
- In **Manage Connections** you can choose whether Vodafone Mobile Connect Lite connects automatically when it detects that your modem has been plugged into your computer.

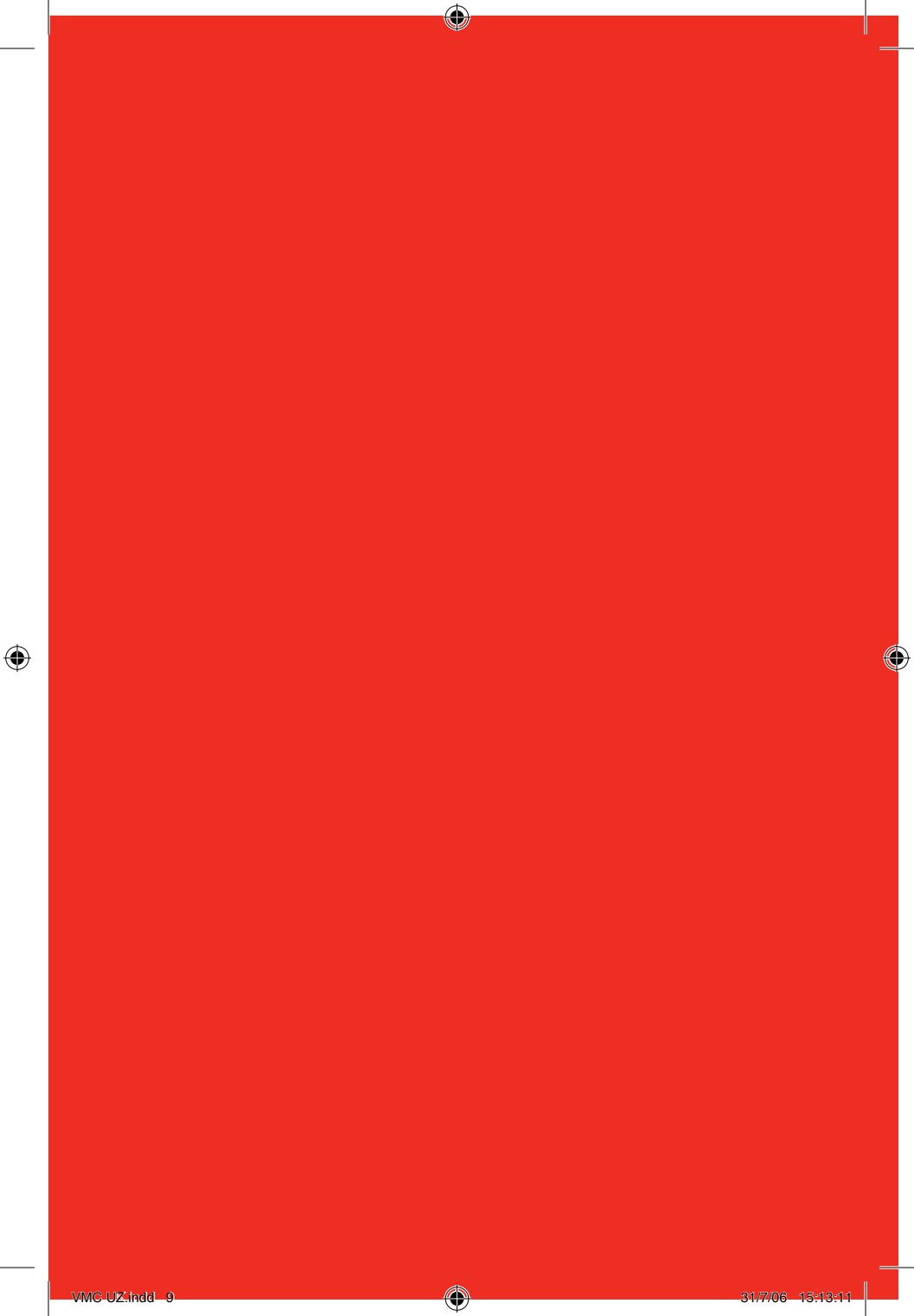


# Troubleshooting

- If nothing happens when you plug the modem into your computer, try using another USB port.
- If you don't see your modem in the list of devices, try removing the USB cable and restarting your computer. Then re-attach the cable and let Vodafone Mobile Connect Lite restart.
- If you can't make a data connection, make sure that your SIM is enabled for data connections. Contact Support if you're not sure.
- If you get an error message: **Error: you must be on the Vodafone network to make a connection**, please check that you are using a Vodafone SIM card. You can only use Vodafone Mobile Connect Lite with Vodafone operators.
- For any other problems, first try the **Help** menu in the Vodafone Mobile Connect Lite main screen.

## Support

- For general queries, please visit [www.vodafone.co.nz](http://www.vodafone.co.nz) or call Vodafone on **777** or **0800 800 021**
- For further help, please visit [www.business.vodafone.com](http://www.business.vodafone.com), or call Vodafone Support on **0800 921 021**



© Vodafone 2006. Vodafone and the  
Vodafone logos are trade marks of the  
Vodafone Group.

Any product or company names mentioned  
herein may be the trade marks of their  
respective owners.